

Cash Flow User Guide



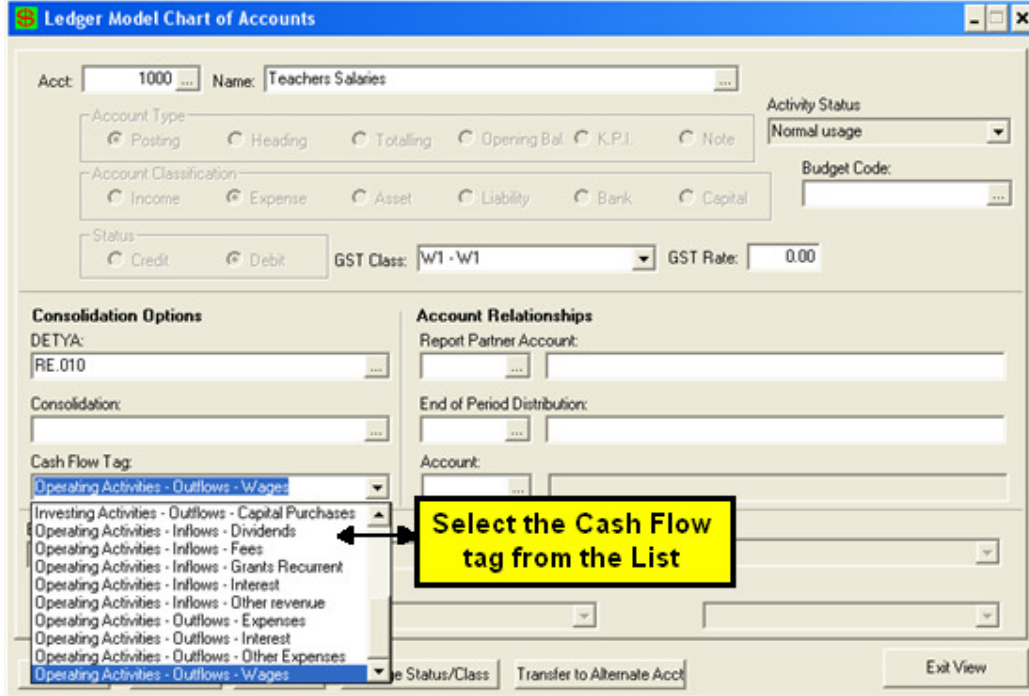
Table of Contents

<u>Cash Flow.....</u>	<u>2</u>
-----------------------	----------

Cash Flow

Path: General Ledger → Model Account Entry

This report requires an appropriate Cash Flow tag in Model Account Entry.



Available Cash Flow Tags

Cash Flow	Description
CF.FA.I.B	Financial Activities - Inflows - Borrowings
CF.FA.I.C	Financial Activities - Inflows - Capital Contributions
CF.FA.I.G	Financial Activities - Inflows - Capital Grants
CF.FA.O.D	Financial Activities - Outflows - Drawings
CF.FA.O.R	Financial Activities - Outflows - Loan Repayments
CF.IA.I.S	Investing Activities - Inflows - Capital Sales
CF.IA.O.P	Investing Activities - Outflows - Capital Purchases
CF.NC.A	Cash Flow - Non Cash - Amortisation
CF.NC.D	Cash Flow - Non Cash - Depreciation
CF.NC.I.A	Cash Flow - Non Cash - Current Assets exc Banks
CF.NC.I.L	Cash Flow - Non Cash - Current Liabilities
CF.NC.S	Cash Flow - Non Cash - Gain (Loss) Sale Capital Items
CF.OA.I.D	Operating Activities - Inflows - Dividends
CF.OA.I.G	Operating Activities - Inflows - Grants Recurrent
CF.OA.I.I	Operating Activities - Inflows - Interest
CF.OA.I.O	Operating Activities - Inflows - Other revenue
CF.OA.I.R	Operating Activities - Inflows - Fees
CF.OA.O.E	Operating Activities - Outflows - Expenses
CF.OA.O.I	Operating Activities - Outflows - Interest
CF.OA.O.O	Operating Activities - Outflows - Other Expenses
CF.OA.O.W	Operating Activities - Outflows - Wages

Regardless of classification, all impact on the bank account will be reported as follows;

- Opening Bank Balance
- Financing Activities
- Investing Activities
- Operating Activities
- Other Impact on Bank (eg GST, Clearing Accounts etc)
- Unspecified (i.e. accounts without a Cash Flow tag)
- Closing Bank Balance

Path: General Ledger → Cash Flow

Print the Report for a Single Period.

Entity: COLLEGE ...
Account: Working A/c ...
1. Select Bank account

Period Selection Criteria
 One Period All Periods including Pd: January 2009

Report Selection
Report Style: Cash Flow Single Period
Report Alias: CASHFLOW1.RPT

Output destination
 Print to Window Export to File
 Print to Printer Export to Mail

Export File Settings
File Name: Custlst.doc
File Type: Comma Separated
 Apply combo extension

Print Exit View

1. Select the Bank Account to print.

Select a Parameter.

Enter Parameter Values

Parameter Fields:
Level of detail

Level of Detail?

Discrete Value: Summary
Summary
Detail
Full Dissection

Summary

11/09/2009			
		<u>PD1</u>	
Opening Bank Balance			-\$40,505.55
Financing Activities			\$80.00
Operating Activities			-\$253,482.47
Unspecified Activities			-\$1,000,000.00
Other Impact eg GST			\$81,717.91
	Closing Balance		-\$1,212,190.11

Detail

11/09/2009				
		<u>PD1</u>	<u>PD1</u>	
Opening Bank Balance				-\$40,505.55
Financing Activities - Inflows			80.00	
Financing Activities				\$80.00
Operating Activities - Inflows		8,276.51		
Operating Activities - Outflows		261,758.98		
Operating Activities				-\$253,482.47
Unspecified Inflows		100,000.00		
Unspecified Outflows		1,100,000.00		
Unspecified Activities				-\$1,000,000.00
Non Cash Impact on Bank		81,717.91		
Other Impact eg GST				\$81,717.91
	Closing Balance			-\$1,212,190.11

Full Dissection

11/09/2009					
			<u>PD1</u>		
Opening Bank Balance	Acc-Sub				-\$40,505.55
CF.FA.I.C	930 - 0	80.00			
CF.FA.I.C	930 - 10				
CF.FA.I.C			80.00		
Financing Activities - Inflows				80.00	
Financing Activities					\$80.00
CF.OA.I.I	510 - 0	110.09			
CF.OA.I.I			110.09		
CF.OA.I.O	4500 - 0	181.84			
CF.OA.I.O	275 - 0	25.00			
CF.OA.I.O	4600 - 0	1,379.99			
CF.OA.I.O	4100 - 0	2,582.76			
CF.OA.I.O	590 - 0	334.78			
CF.OA.I.O	4700 - 0	85.00			
CF.OA.I.O	270 - 1	9.10			
CF.OA.I.O			4,598.47		
CF.OA.I.R	290 - 1	200.00			
CF.OA.I.R	110 - 0	2,377.95			
CF.OA.I.R	125 - 0	990.00			
CF.OA.I.R			3,567.95		
Operating Activities - Inflows				8,276.51	

Print the Report for multiple Periods.

Entity: COLLEGE ...

Account: Working A/c ...

Period Selection Criteria
 One Period All Periods including Pd: June 2009

Report Selection
 Report Style: Cash Flow Up to And Including Period
 Report Alias: CASHFLOWALL.RPT

Summary

17/09/2009		Working A/c						From January 2					
Your School Name		PD1	PD2	PD3	PD4	PD5	PD6						
Opening Bank Balance		-\$40,585.55	-1,212,190.11	66,816.75	188,870.09	25,361.92	45,406.53						
Financing Activities		\$00.00	00.00	-54,981.33	-181,738.19	00.00	56,040.00						
Investing Activities													
Operating Activities		-\$253,482.47	851,835.76	-267,211.89	-243,189.37	-215,115.18	-92,250.89						
Unspecified Activities		-\$1,000,000.00	200,000.00	463,000.00	400,000.00	200,000.00	61,000.00						
Other Impact eg GST		\$81,717.91	238,120.00	-18,753.44	-138,668.61	35,879.71	-33,568.36						
Closing Balance		-\$1,212,190.11	\$69,845.65	\$188,870.09	\$25,361.92	\$45,406.53	\$24,435.28						

Detail

13/09/2009		Working A/c								From January 2009 To June 2009							
Acc-Sub		PD1	PD2	PD3	PD4	PD5	PD6	PD7	PD8								
Opening Bank Balance		-\$40,585.55	-1,212,190.11	66,816.75	188,870.09	25,361.92	45,406.53	59,435.28	37,772.74								
Financing Activities - Inflows		00.00	00.00	-54,981.33	-181,738.19	00.00	56,040.00										
Financing Activities		\$00.00	00.00	-54,981.33	-181,738.19	00.00	56,040.00										
Investing Activities - Outflows		0.00					12,200.00										
Investing Activities							-12,200.00										
Operating Activities - Inflows		8,276.51	1,148,832.13	15,789.89	28,885.40	27,971.98	34,865.54										
Operating Activities - Outflows		261,758.98	288,996.37	282,921.58	263,194.86	243,887.88	128,316.43										
Operating Activities		-\$253,482.47	851,835.76	-267,211.89	-243,189.37	-215,115.18	-92,250.89										
Unspecified Inflows		100,000.00	200,000.00	463,000.00	400,000.00	200,000.00	100,000.00										
Unspecified Outflows		1,100,000.00					30,000.00										
Unspecified Activities		-\$1,000,000.00	200,000.00	463,000.00	400,000.00	200,000.00	61,000.00										
Non Cash Impact on Bank		\$1,717.91	238,120.00	-18,753.44	-138,668.61	35,879.71	-33,568.36										
Other Impact eg GST		\$81,717.91	238,120.00	-18,753.44	-138,668.61	35,879.71	-33,568.36										
Closing Balance		-\$1,212,190.11	\$69,845.65	\$188,870.09	\$25,361.92	\$45,406.53	\$24,435.28	\$59,435.28	\$37,772.74								